

Problem

With government downsizing of staff, multiple government agencies consolidated diverse equipment infrastructure to shared co-location spaces across the state. Equipment visibility at these remote sites was vital. In addition to monitoring environmental conditions at the rack, each government agency required charge-back billing for their specific power consumption and for their utilized space.

Solution

After Cormant DCIM deployment, the co-location provider and the tenant has achieved:

- Automated customer transparency via a web portal where tenants can see their specific power consumption data.
- 3-phase power reporting allowing customer power load phase balancing.
- Real-time visibility to environmental temperature and humidity metrics.
- Asset Compliance reporting (government requirement).
- Lower equipment and power costs.
- Measurable environmental and CO₂ impact per site.
- Massively improved collaboration with the colocation and service providers.
- Increased resilience to failure by measuring usage/failover capacity between master and extension PDUs.

Co-Location Assets & Power Management Success with Cormant

The Scenario

A large state government, their contracted data center manager, and a world-renowned colocation data center provider had to find a better way to manage IT equipment, power, environmental monitoring and charge back at four dispersed data centers.

DCIM for Colocation Data Centers

After the state government had selected their colocation provider, the colocation provider selected a software solution for IT equipment and asset management; they chose Cormant DCIM and originally deployed it as a single-use solution to only cover the asset management portion that the contract required.

This case study demonstrates the extended functionality of Cormant-CS, the importance of remote visibility of environmental data and co-located assets, and in selecting a skilled and savvy data center service provider to train the site customers, implement the solution, and add expanded capabilities to deliver specific user required outcomes.

Co-location Site / Rack Problems

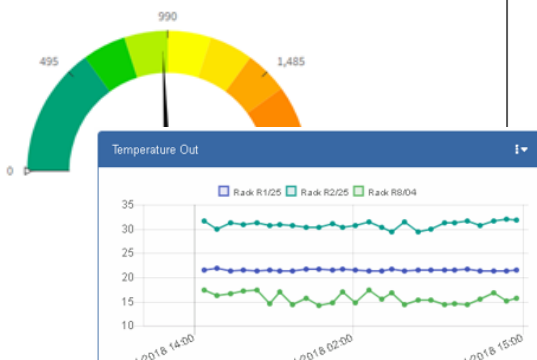
The co-location operator identified poor equipment rack management, inefficient airflow, and hard to manage hot and cold aisles with some equipment mounted backwards. The 3-phase rack power was identified to be significantly out of balance. With approx. 3,000 PDUs, of different makes, models and capabilities, viewing like-for-like data was impossible.

Colocation Provider Benefits after Cormant-CS Deployment

- All (multi-vendor) PDU's queried online, near real-time.
- Normalized power data from assorted units of measure across multiple vendor PDU's.
- Data Collection reduced from weeks to minutes.
- Visual view of phase balance was used to convince the customers to re-balance the rack equipment.
- Standard baseline readings allow for metering consumption.
- Power metering consumption reports generated automatically based on a configured schedule. Used for customer billing.
- PDU failure alerted if not automatically recovered.
- Offline mobility used, so that data is always available to the technicians.
- Long term historical data capture, trending, graphing and alerting.
- Unlimited Cormant-CS license for data points, additional site, users, racks.

State Government Benefits after Cormant-CS Deployment

- Data transparency via a web portal where state government tenants can see their specific power consumption data.
- Secured access to view each department's racks and equipment.
- Connectivity views provide carrier connectivity status, as well as in-rack redundance visualization.
- Full capacity data is available, including RU, ports, power, and conduit data.
- Customer visibility to environmental temperature and humidity.
- Government Asset Compliance reporting.



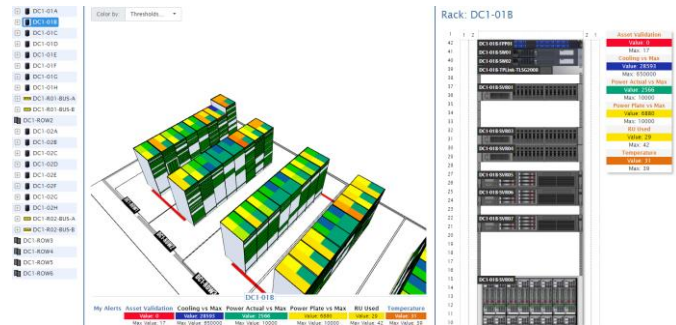
Use of Capacity Data for Planning

Cormant-CS enables enterprises to consume capacity data in multiple graphical and textual formats and the data can also be exported and exchanged with external systems, including CMDB and ITSM solutions.

Any data can be aggregated and where multiple sites exist data can be compared on a site-by-site bases.

Data Consumption and Visualization

- Full, widget based, user configurable dashboards of historical and current data.
- Three-dimensional floor plans and rack elevations, including user defined capacity color coding of rack and equipment.
- Comparison multiple metrics of a similar type, such as power plate, actual and estimated per device, rack and data center.
- Custom reports, including a full built-in report writer.
- Scheduled reporting and exports in multiple formats.
- Alerting on user-defined capacity points
- Work-flow location selector, providing guidance on the best permitted location for new equipment. Criteria can be configured to meet each enterprise custom requirements.
- Full de-normalized historical data capture for long term trending.
- Full life-cycle equipment and asset data to port level to see history of an asset from order to disposal, including every change made to any data element.
- Two-way Interfaces to external systems.



Cormant-CS

Cormant-CS offers a unique blend of configuration flexibility, data management options and comes as a single complete solution, providing assurance of a solution that can grow with your enterprise.

Cormant BGIS has been provided DCIM and Campus infrastructure management solutions since 2003 and has hundreds of customers on five continents, ranging from a few racks to tens of thousands.

Our dedicated staff can help tailor the right package of software and services for you and will then deliver a fully implemented solution to your enterprise. Contact us for a personal evaluation of your needs and tailored live product demonstration.

Contact BGIS today to see how we can meet your DCIM goals.

Connect with us: www.cormant.com

World Wide: +1 805 747 4178
Australia: +61 (0)2 8518 1298
Belgium: +32 (0)2 401 9240

Germany: +49 (0)6922 224 6223
Ireland: +353 1531 4869
Italy: +39 02360 48279

Netherlands: +31 (0)20 220 9036
Poland: +48 (0)2 2206 2153
Singapore: +65 3159 3522

UK: +44 (0)20 33 972 911
USA/Canada: +1 855 CORMANT
Cormant-Sales@BGIS.com